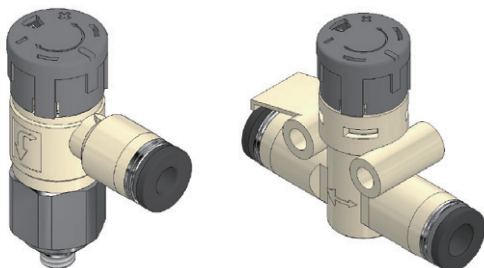


ISC/ISF Series

Speed controller with indicator



Features

- Speed control valve for pneumatic actuators.
- Precise flow adjustment allows easy speed control.
- Surface treated with nickel plating for excellent internal corrosion resistance.

How to order

ISC ** — **

1 2 3

1 Series

ISC : Elbow type
ISF : In-line type

2 Tube O.D.

04 : 4mm
06 : 6mm
08 : 8mm
10 : 10mm

3 Thread size(ISC) / Tube O.D.(ISF)

ISC
M5 : M5*0.8
01 : 1/8
02 : 1/4
03 : 3/8
04 : 1/2

ISF
04 : 4mm
06 : 5mm
08 : 8mm
10 : 10mm

Specifications

Fluid	Air
Maximum allowable pressure	1.5MPa
Operating pressure	0.1~1.0MPa(14.5~145psi)
Operating temperature	-5~60°C
Applicable tube	Nylon, Soft nylon, Polyurethane

※ Please pay attention to the maximum operating pressure of the tube.

Precautions

Please read this carefully before use and refer to the safety and general precautions.